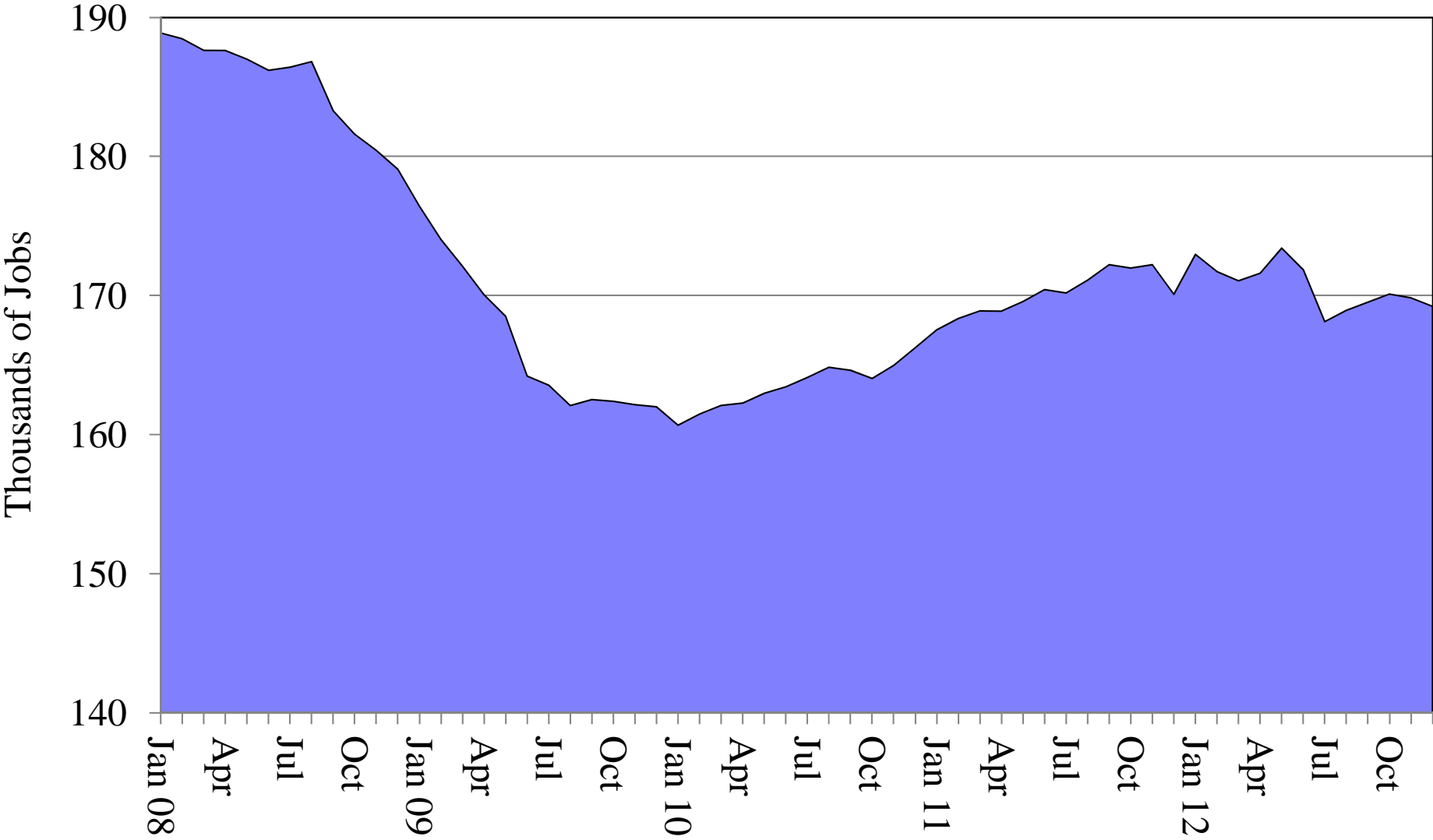


Securities Employment in New York City



Note: Data have been seasonally adjusted.

Sources: NYS Department of Labor; OSC analysis

New York City Securities Industry Employment

(thousands of jobs)

Year	Jan	Feb	Mar	Apr	May	Jun	Jul	Aug	Sep	Oct	Nov	Dec
2008	188.9	188.5	187.6	187.6	187.0	186.2	186.4	186.8	183.3	181.6	180.4	179.1
2009	176.4	174.0	172.1	170.0	168.5	164.2	163.6	162.1	162.5	162.4	162.1	162.0
2010	160.7	161.5	162.1	162.3	163.0	163.4	164.1	164.8	164.6	164.0	165.0	166.2
2011	167.5	168.3	168.9	168.9	169.6	170.4	170.2	171.1	172.2	172.0	172.2	170.1
2012	173.0	171.7	171.1	171.6	173.4	171.9	168.1	168.9	169.5	170.1	169.8	169.2

Note: The data have been seasonally adjusted.

Sources: NYS Department of Labor; OSC analysis